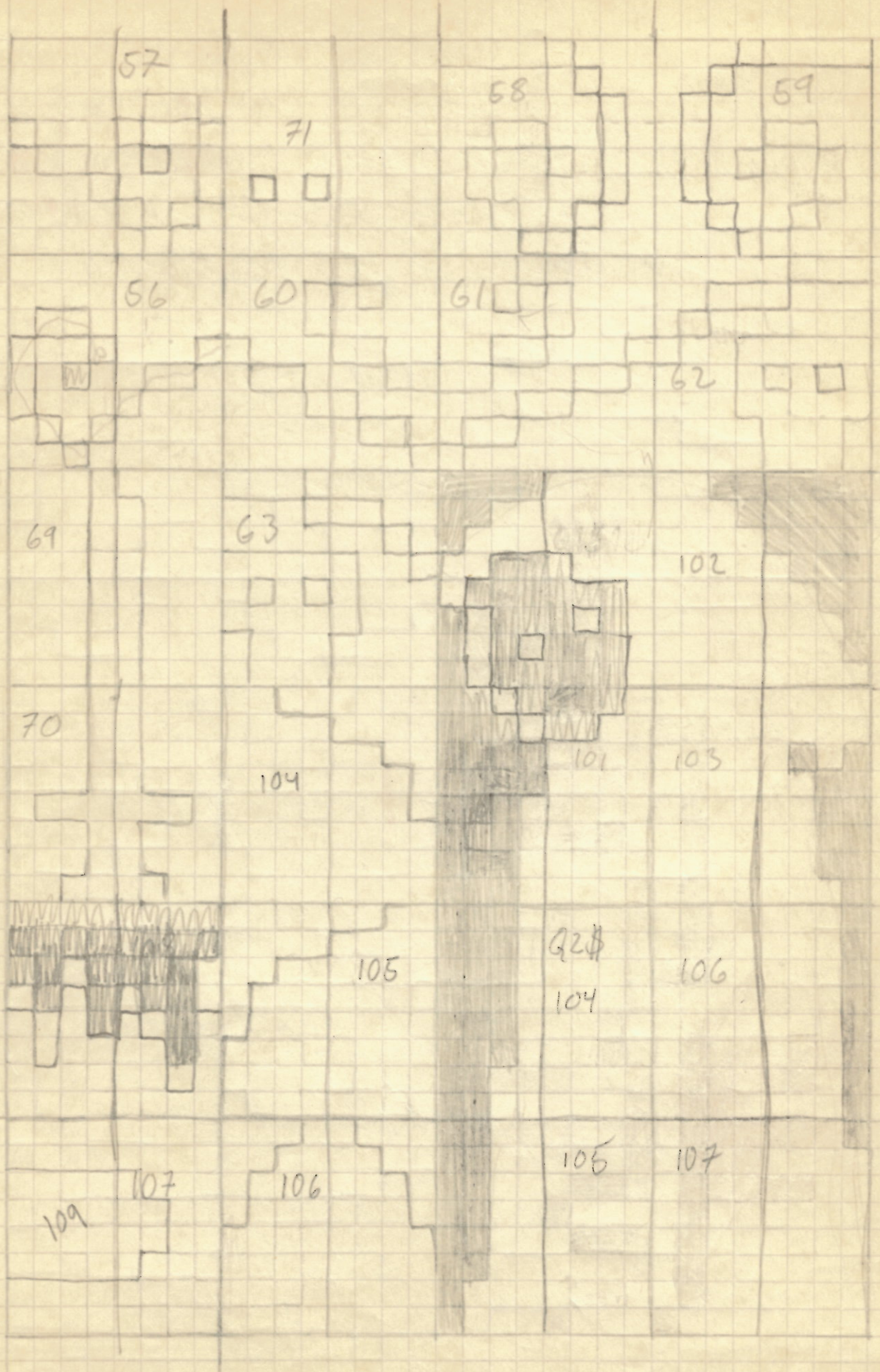


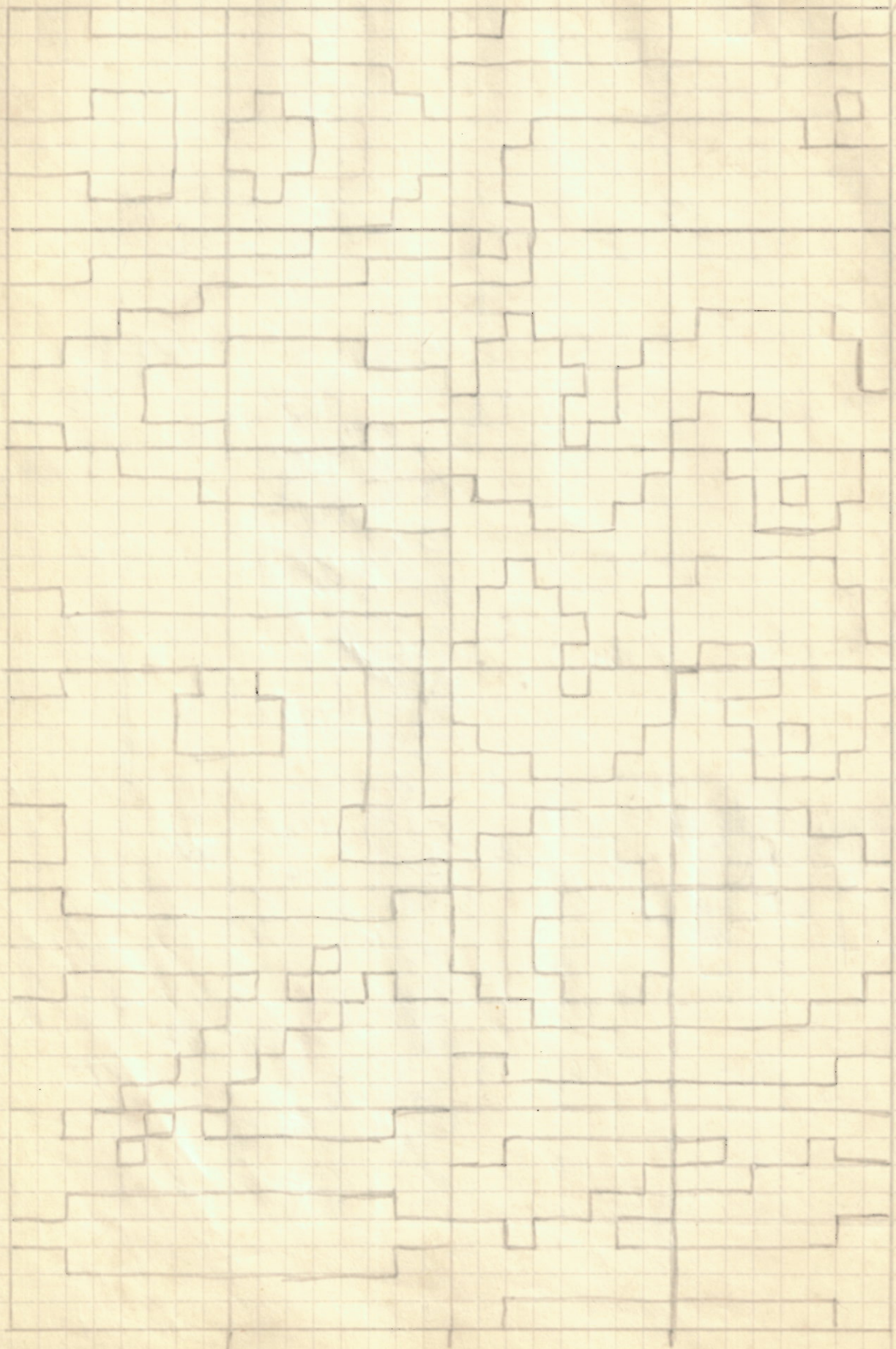
33
↑
+8 48
↓
81

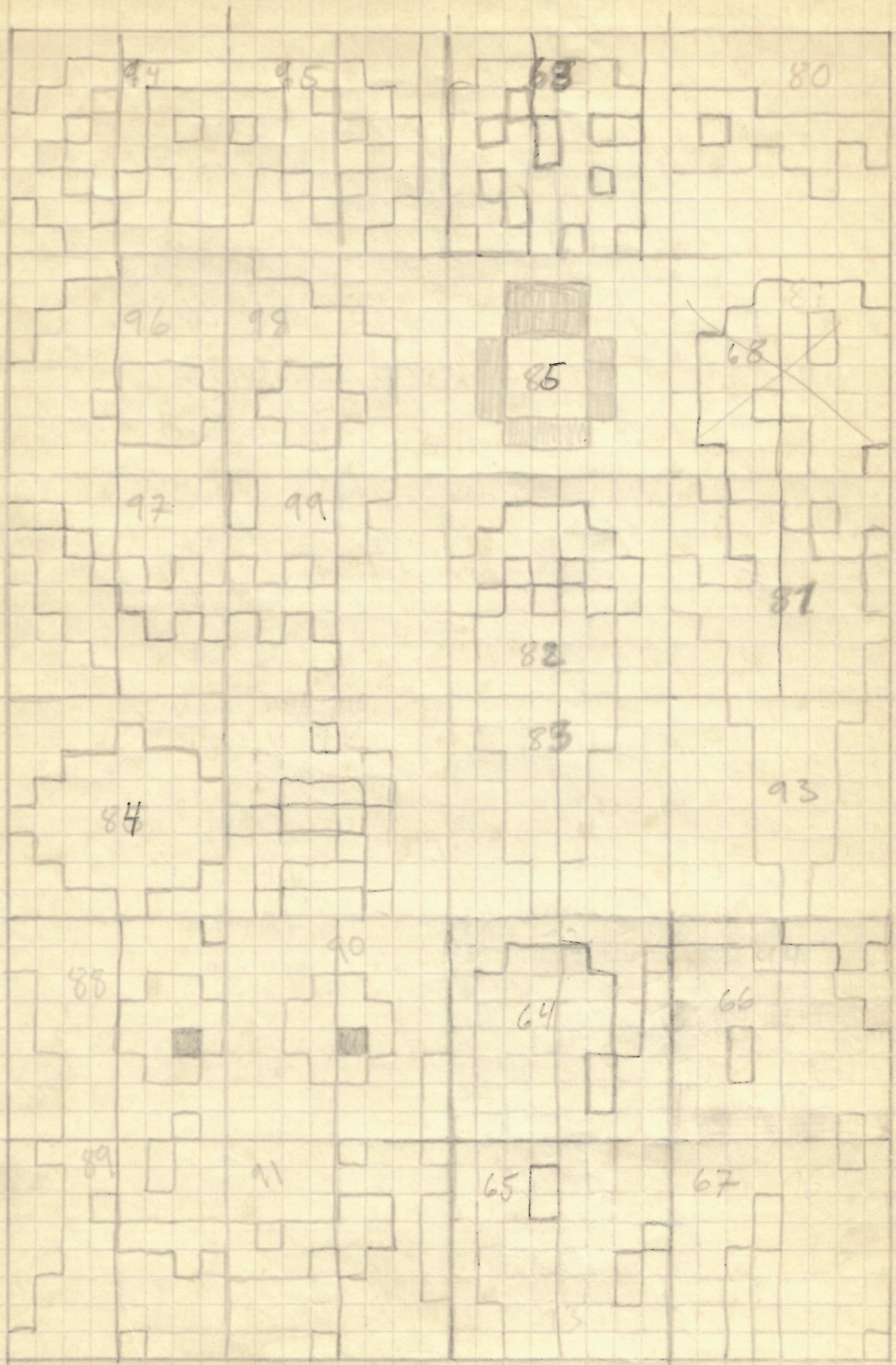
- 1. = 10000
- 2. = 10030
- 3. = 10060
- 4. = 10090
- 5. = 10120
- 6. = 10150
- 7. = 10180
- 8. = 10210
- 9. = 10240
- 10. = 10270
- 11. = 10300
- 12. = 10330
- 13. = 10360
- 14. = 10390
- 15. = 10420
- 16. = 10450
- 17. = 10480

- ~~18. = 10510~~
- 19. =
- 20. =
- 21. =
- 22. =
- 23. =
- 24. =
- 25. =
- 26. =
- 27. =
- 28. =
- 29. =
- 30. =
- 31. =

C, H\$, G1H\$ → G3H\$
 G1V\$ → G3V\$, G1B\$ → G3B\$
 G1N\$, G1U\$, V1H\$, X, Y, V, SK
 X1, Y1, A, B, A1, B1, KR, KRI
 CH, K, S, [M(20), MU\$(20), FLIC
 MY, MN, MY₍₊₈₎2, MSK(20)]
 SV, NX, NY, FX, FY, RX, RY,
 FLX, FLY, LIV

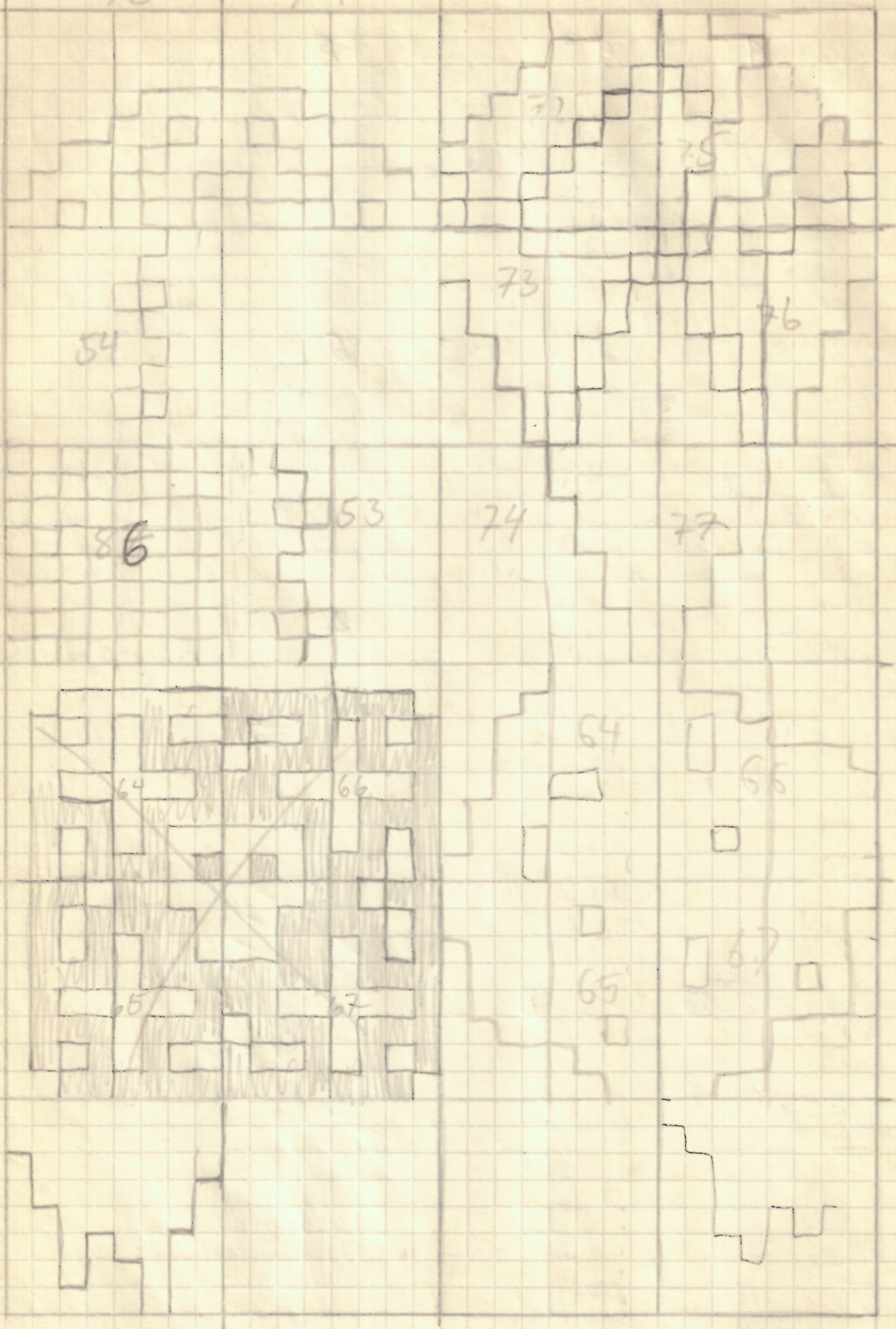






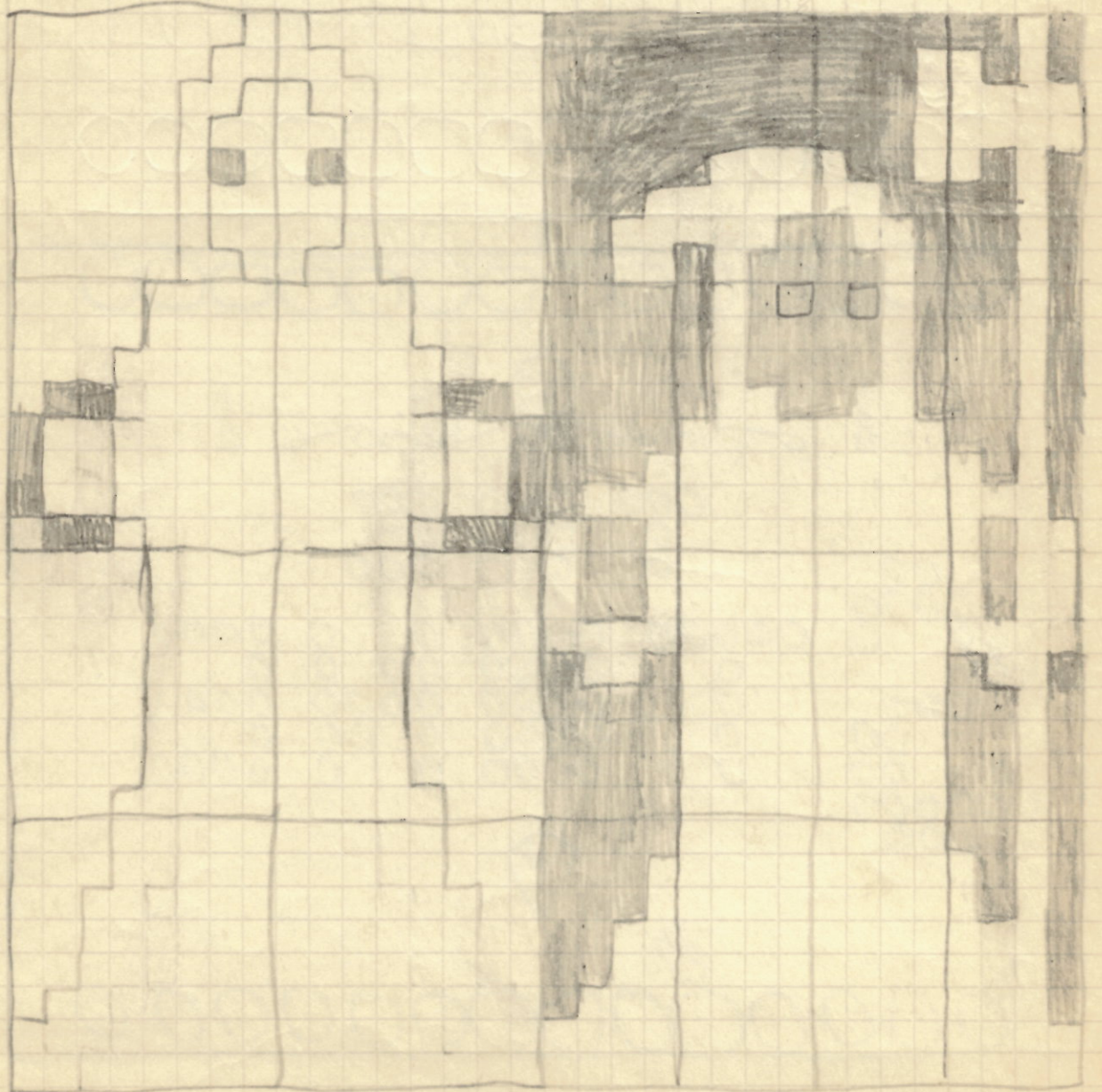
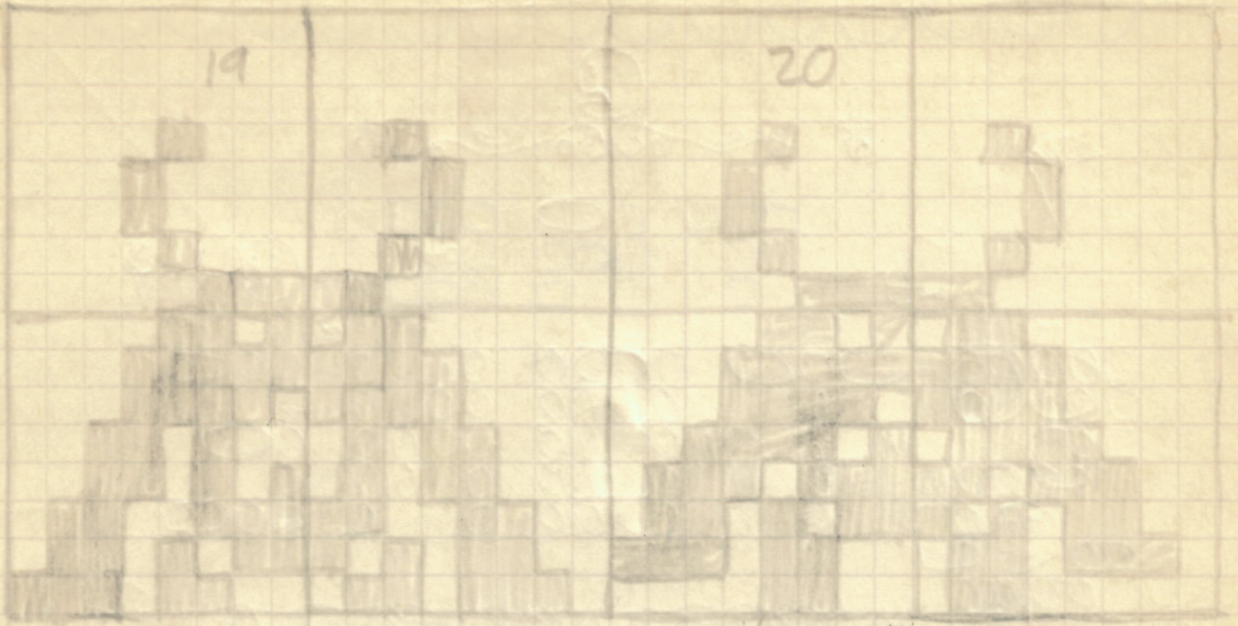
78

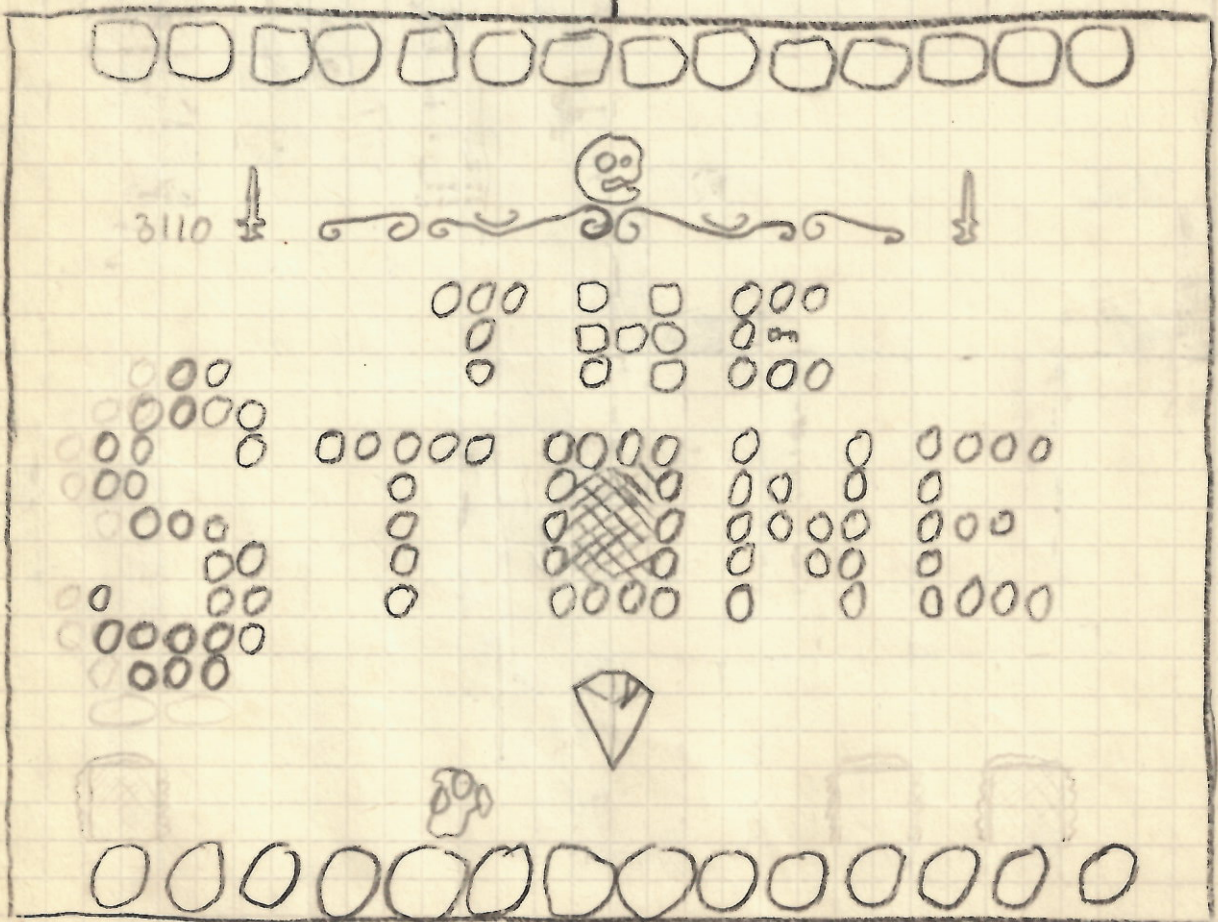
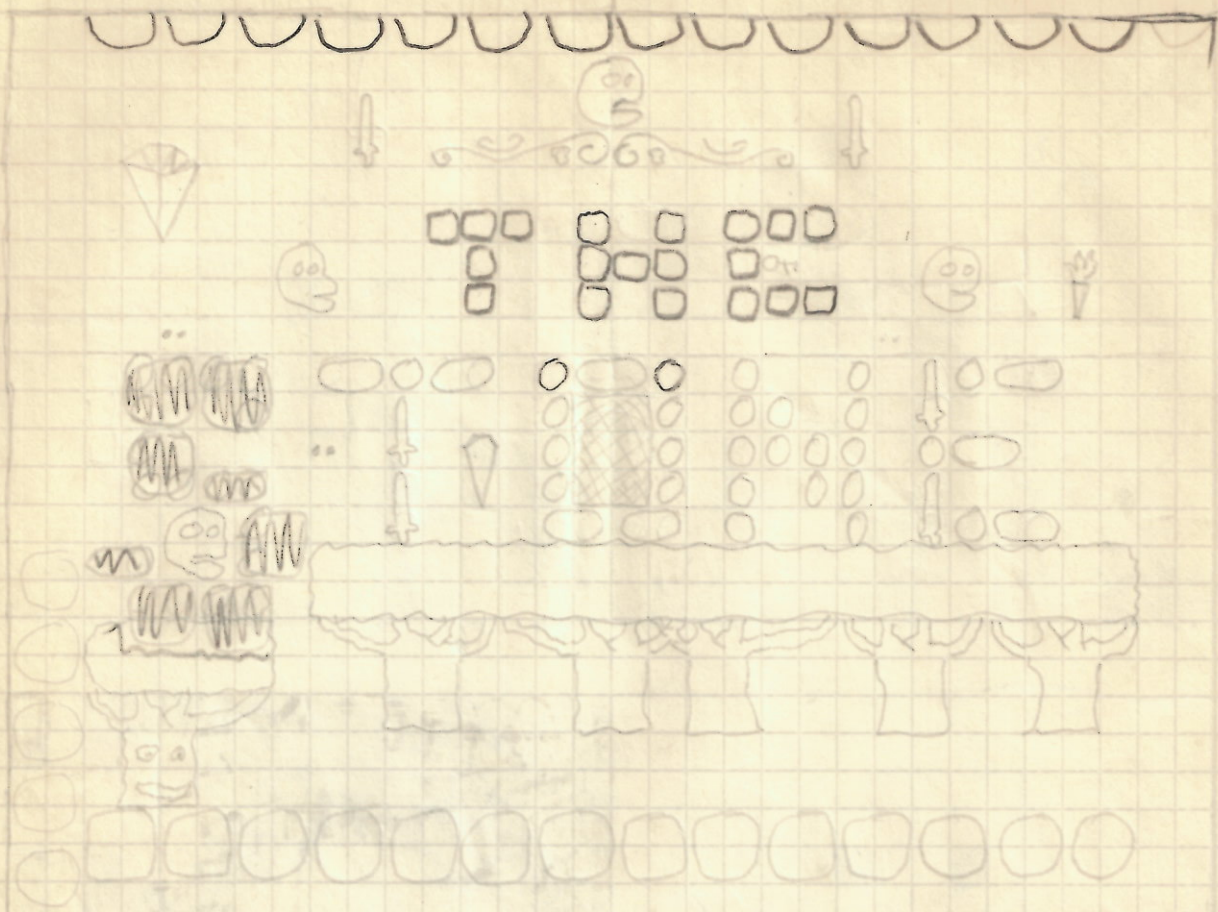
79



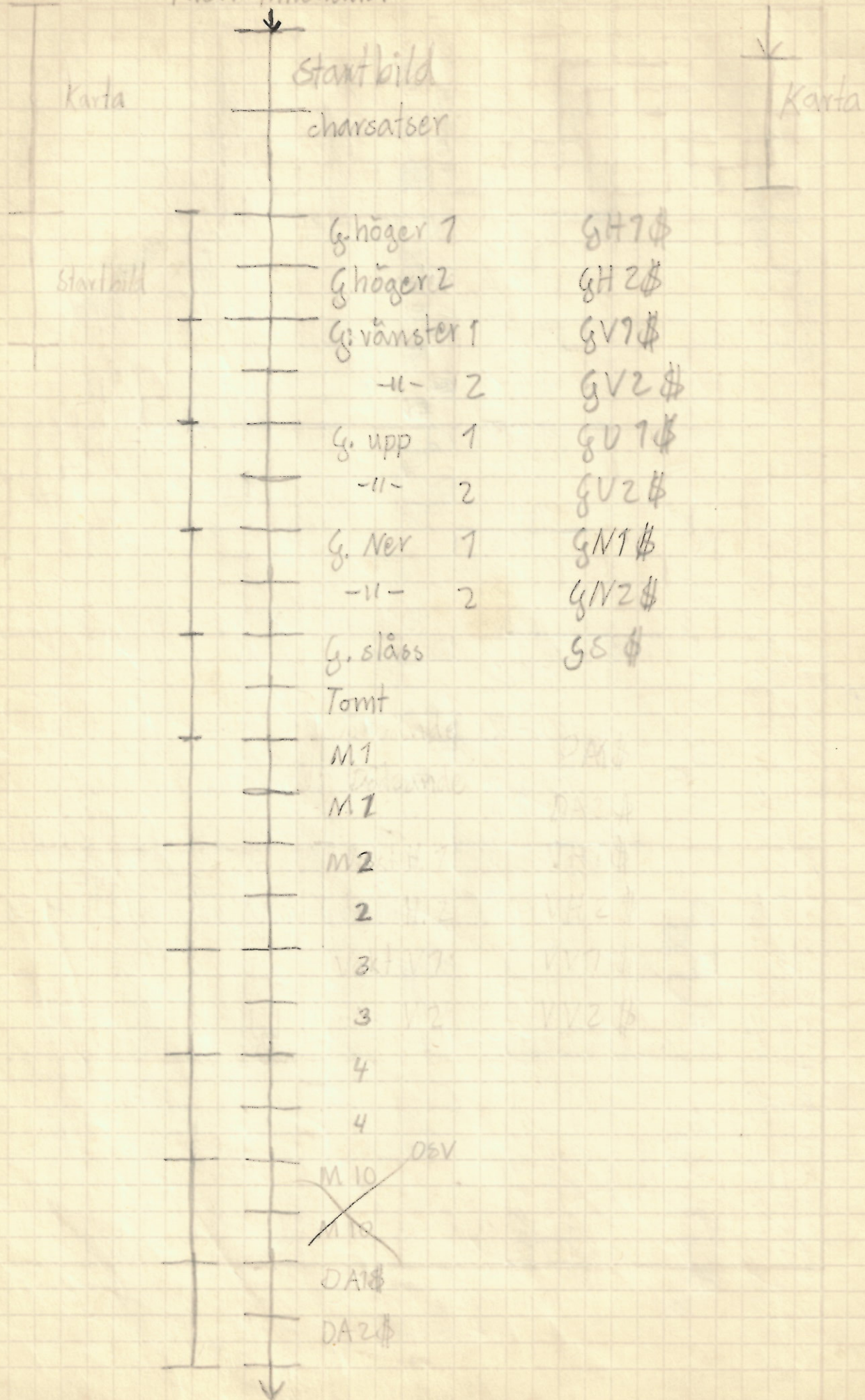
19

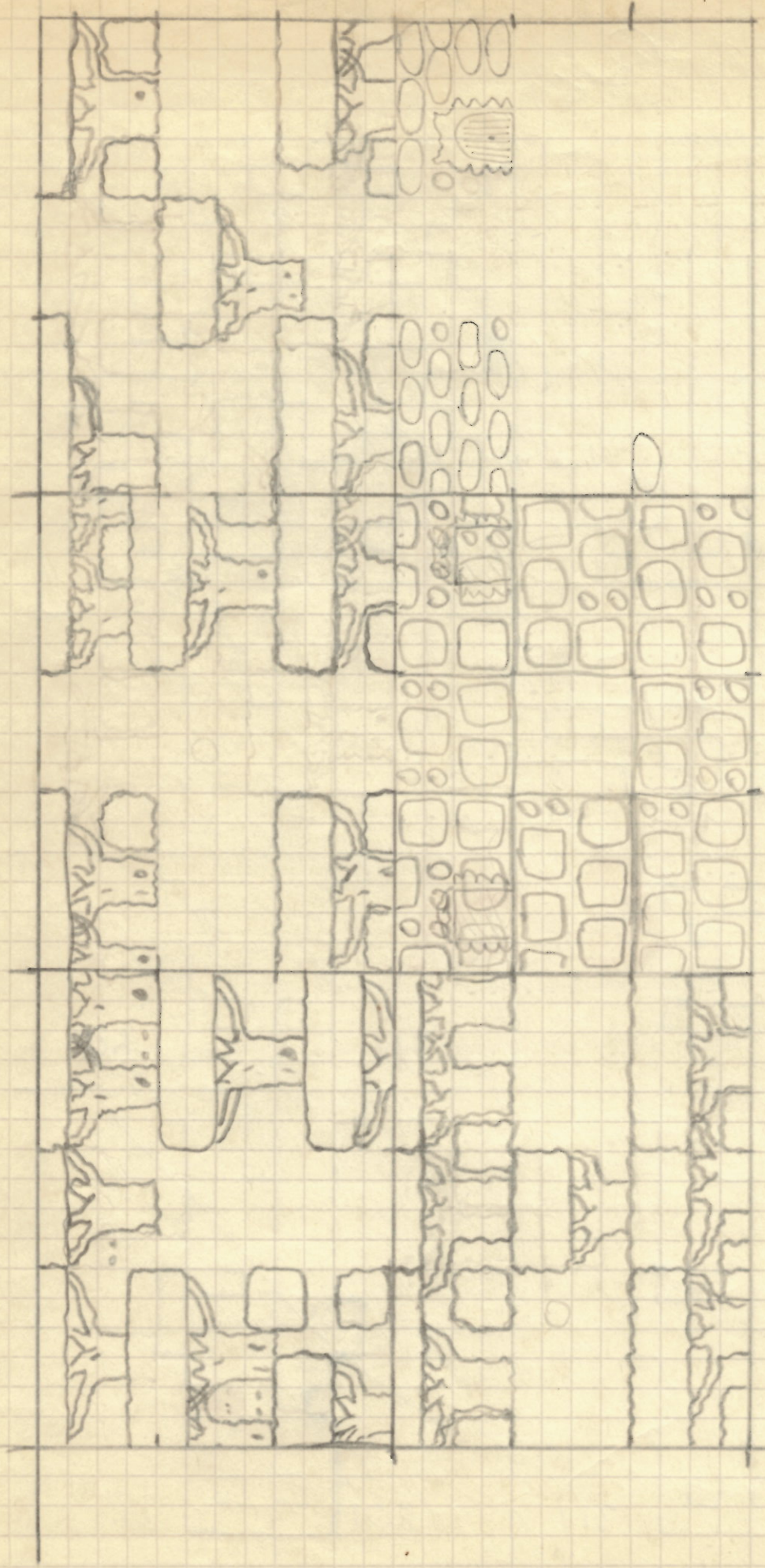
20



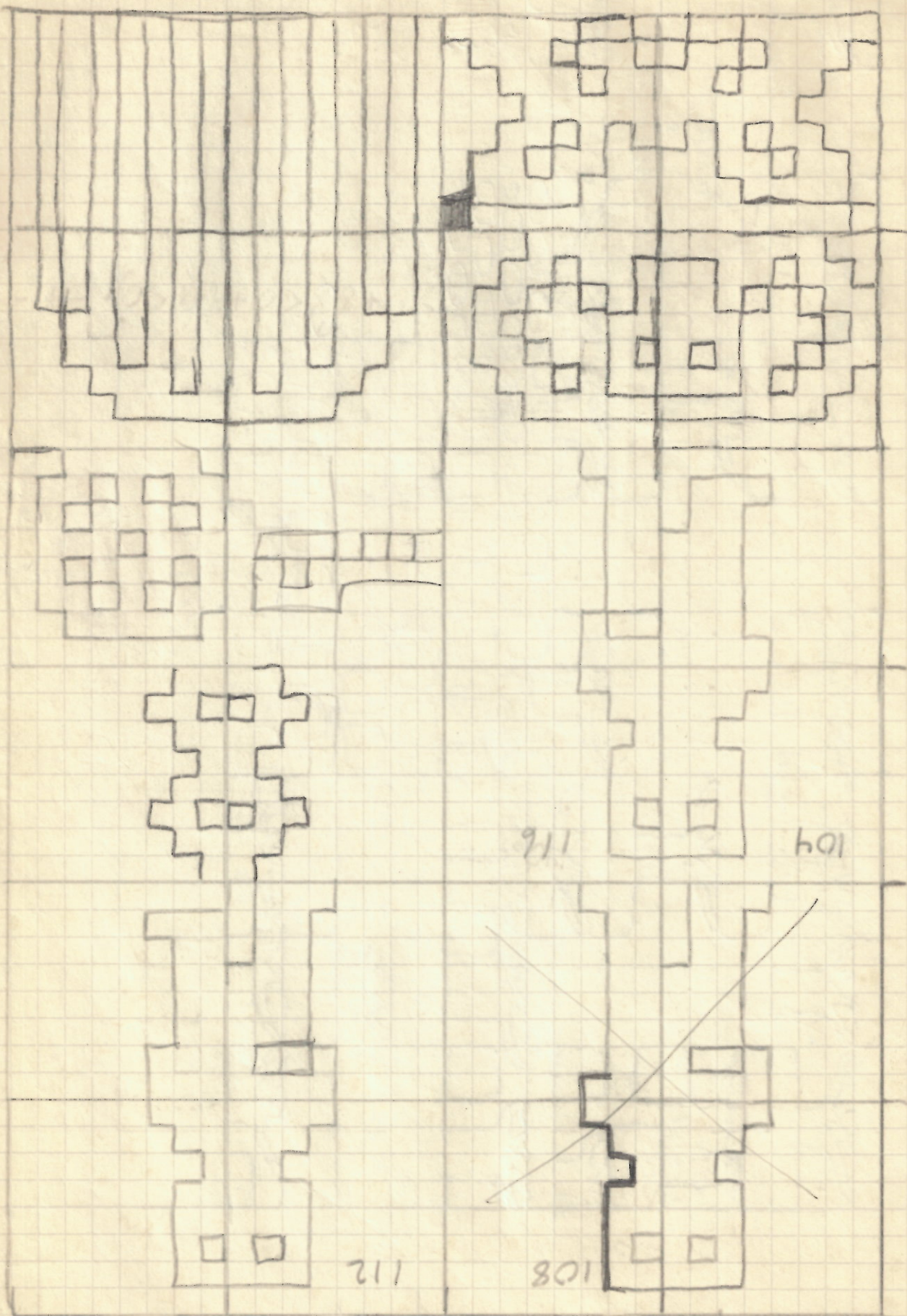


Filen innehåller





9 (99)



911

104

112

108

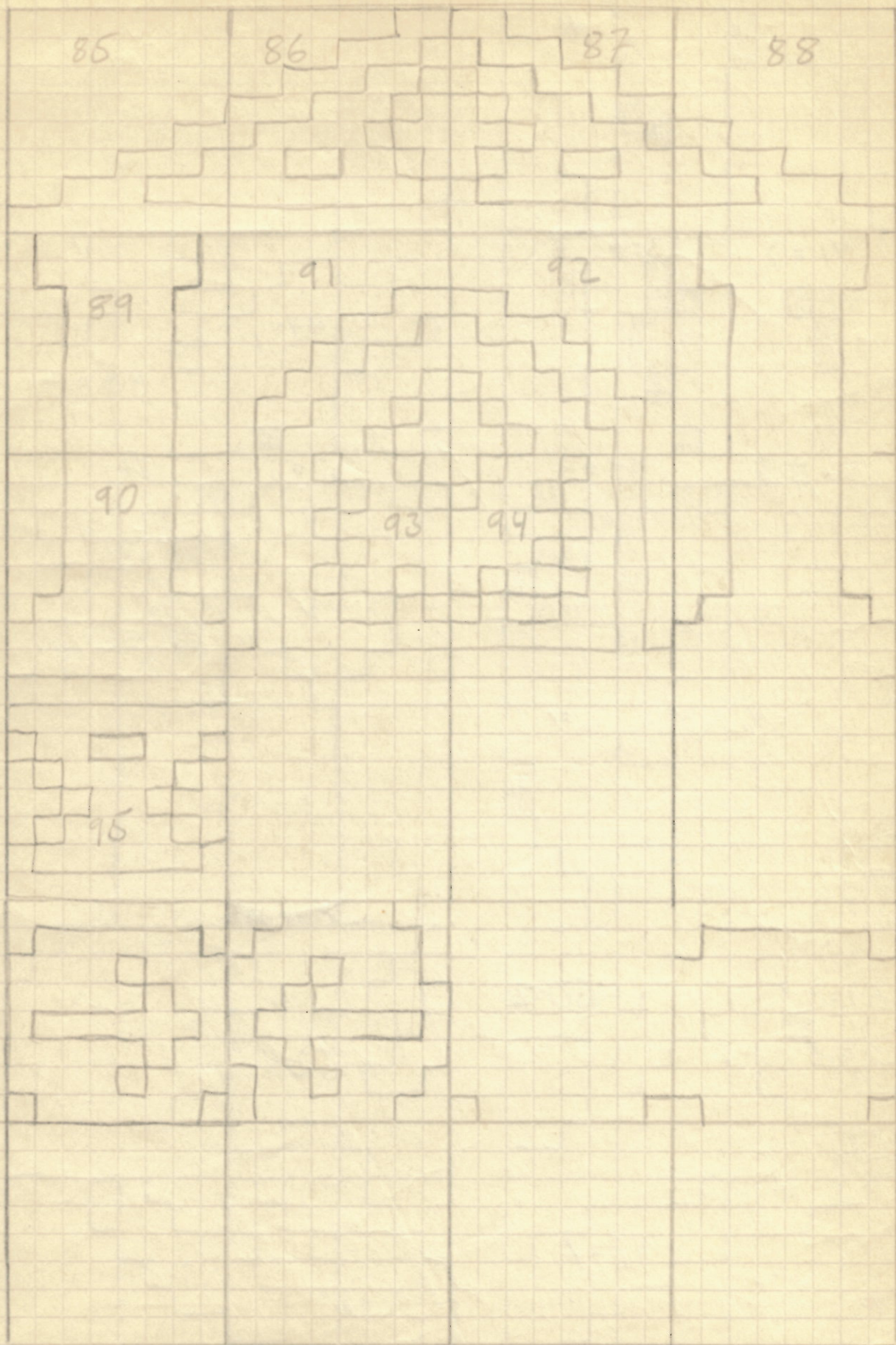
100

96

910

810





40

42

*

41 =)

43 = +

44 = ,

45 = -

36 = 8

38 = &

33 = !

34 = "

37 = %

39 =

= /

51 = 3

50 = 2

52 = 4

46 = .

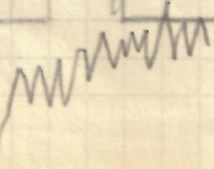
47 = 1

48 = 0

49 = ?

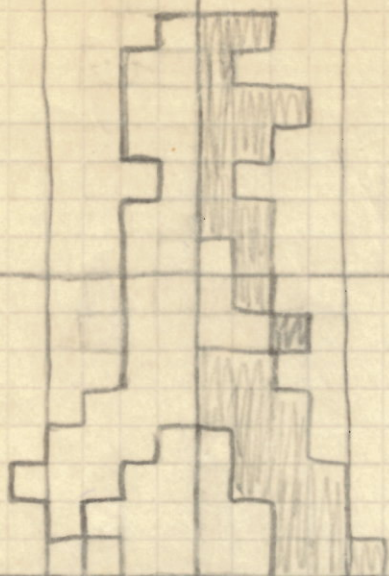
□ Tauschzeichen

normal
ca. 0
nicht

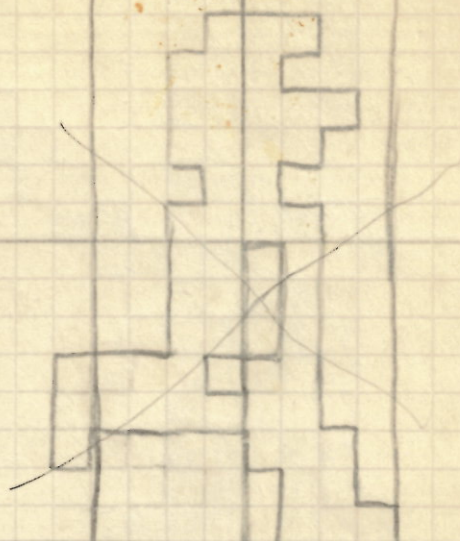


Bohr 1, 2

G1H\$ 120

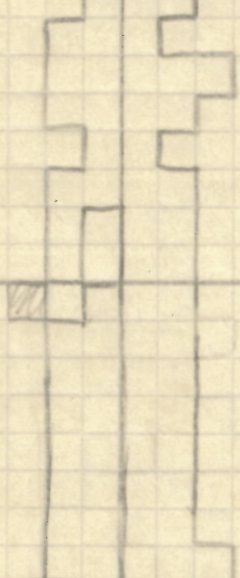


G2H\$ 124



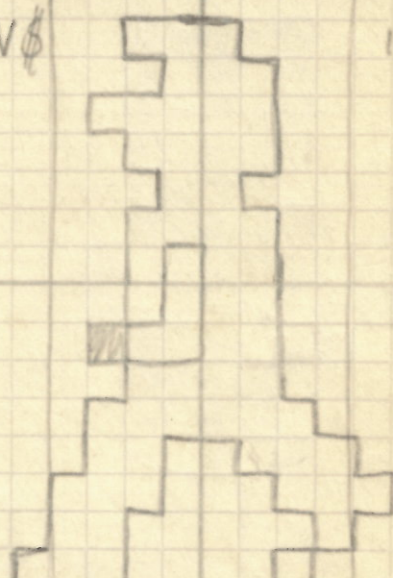
G3H\$

128



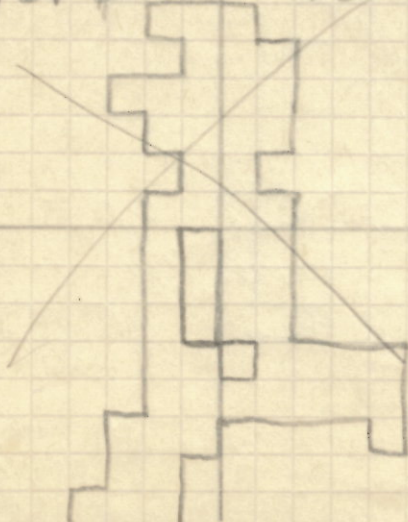
G7V\$

132



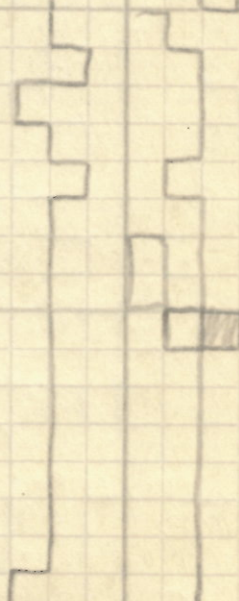
G2V\$

136



G3V\$

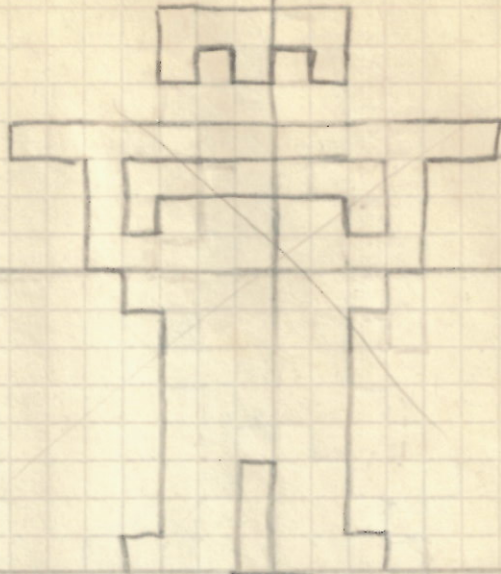
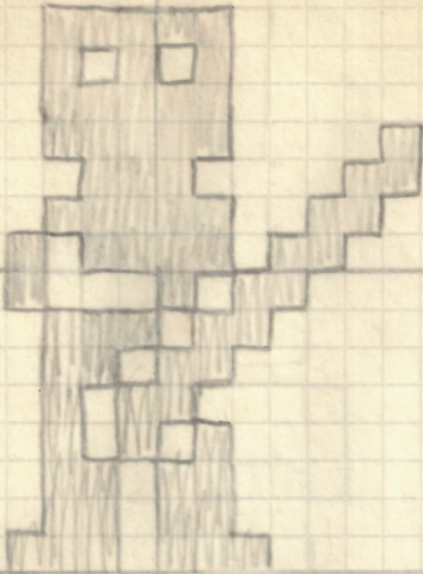
140



G168

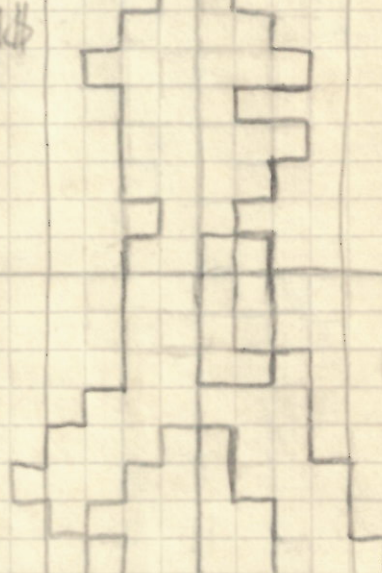
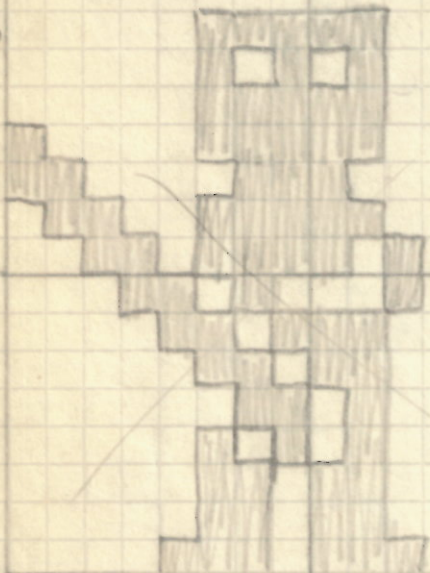
G288

100 calls

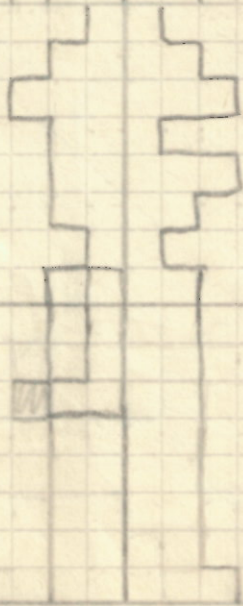
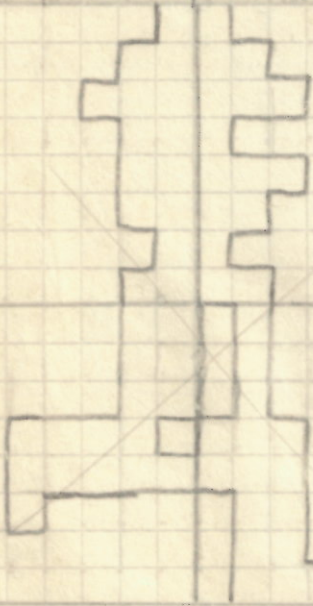


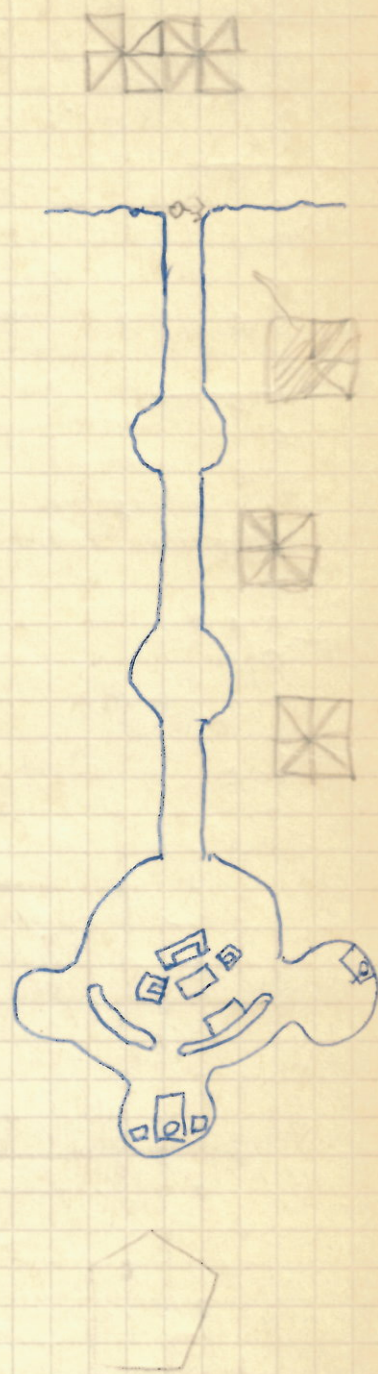
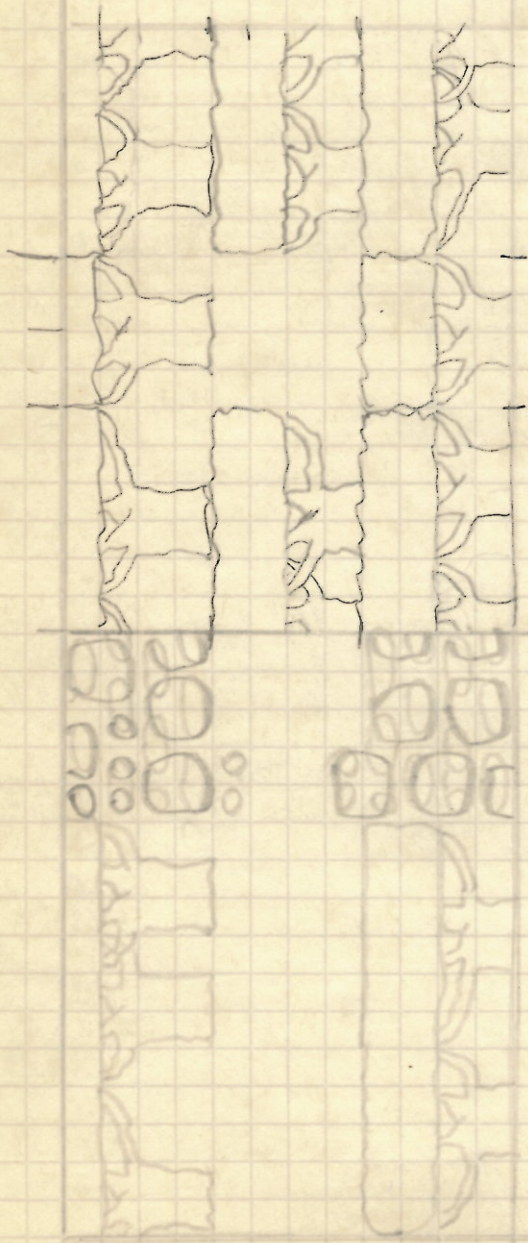
G388

V7H8



V2H8

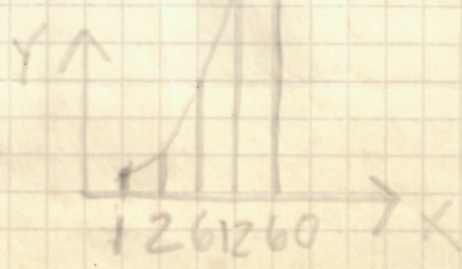






60

A horizontal arrow pointing to the left, starting from the right edge of the page and ending at the number 60.



Points de Vie Points de Force

Vie
28

Force
16

OR
15

199

Goud	2.
- II -	2.
Ration	
n	
n	
n	
défense d'ivoire	
Potion de Guérison	
Parchemin	

** THE STONE **

AV

FREDRIK NILSSON

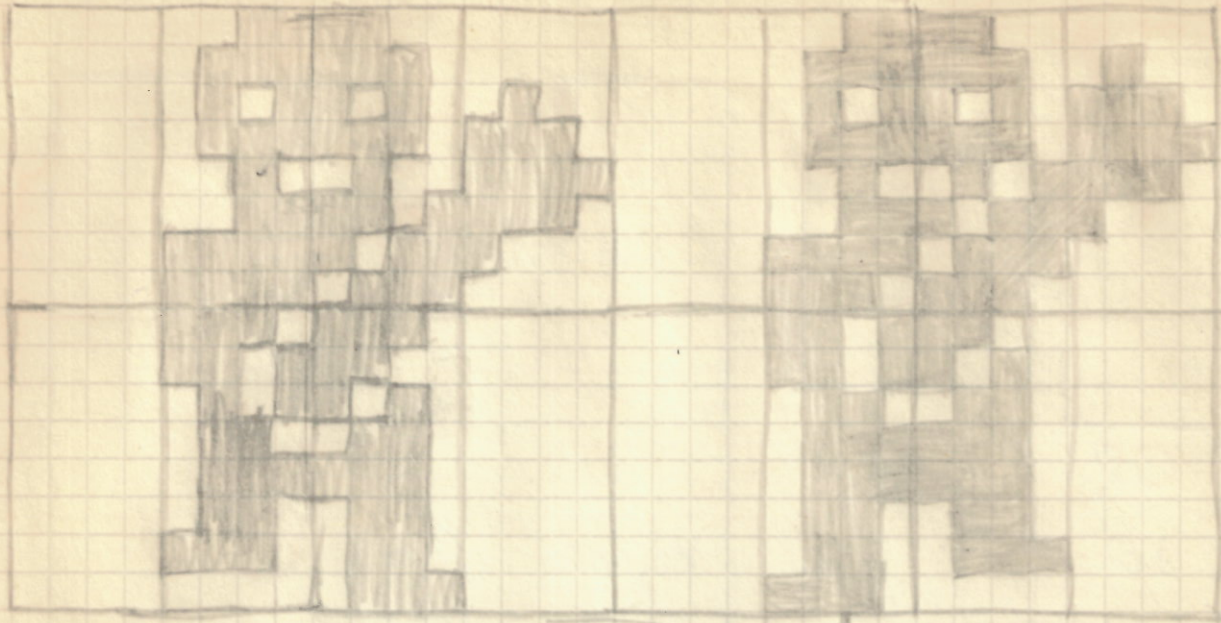
INSPELNINGEN AV FILEN

TAR CIRKA 210 SEKUNDER

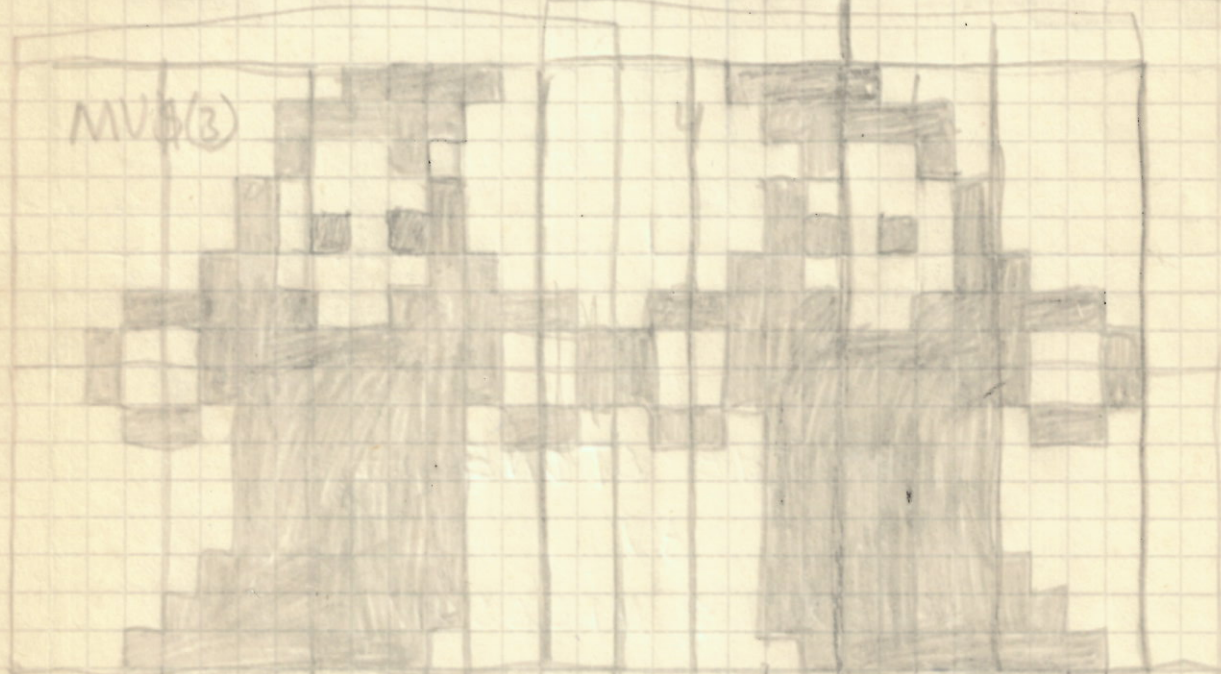
(1) JOYSTICK (2) TANGENTER

MV(1)

MV(2)

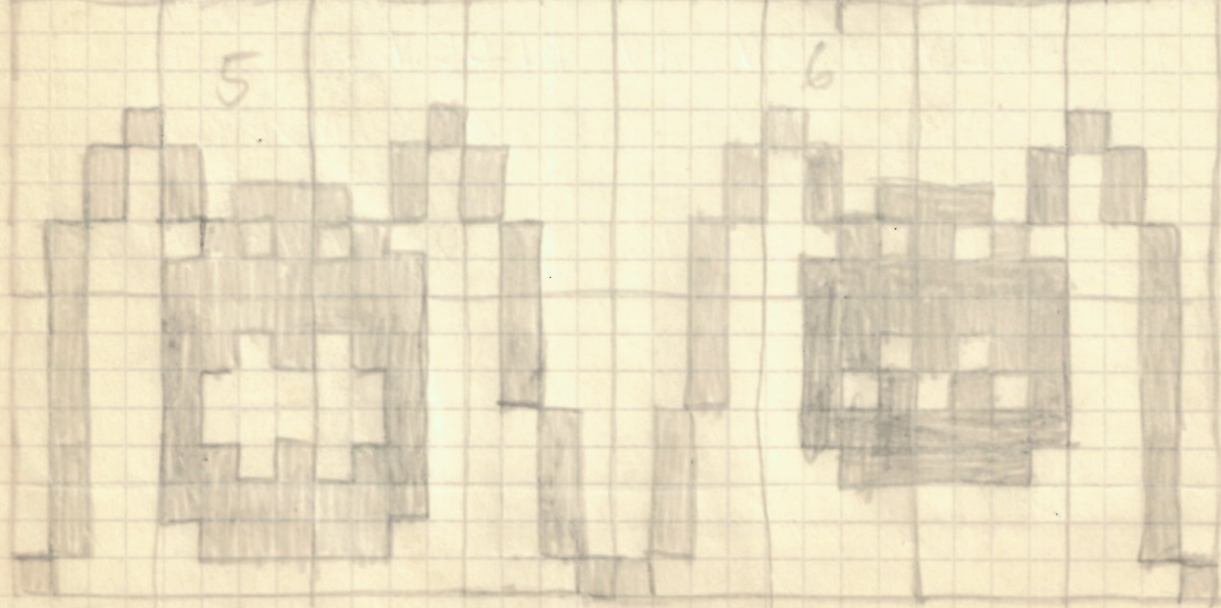


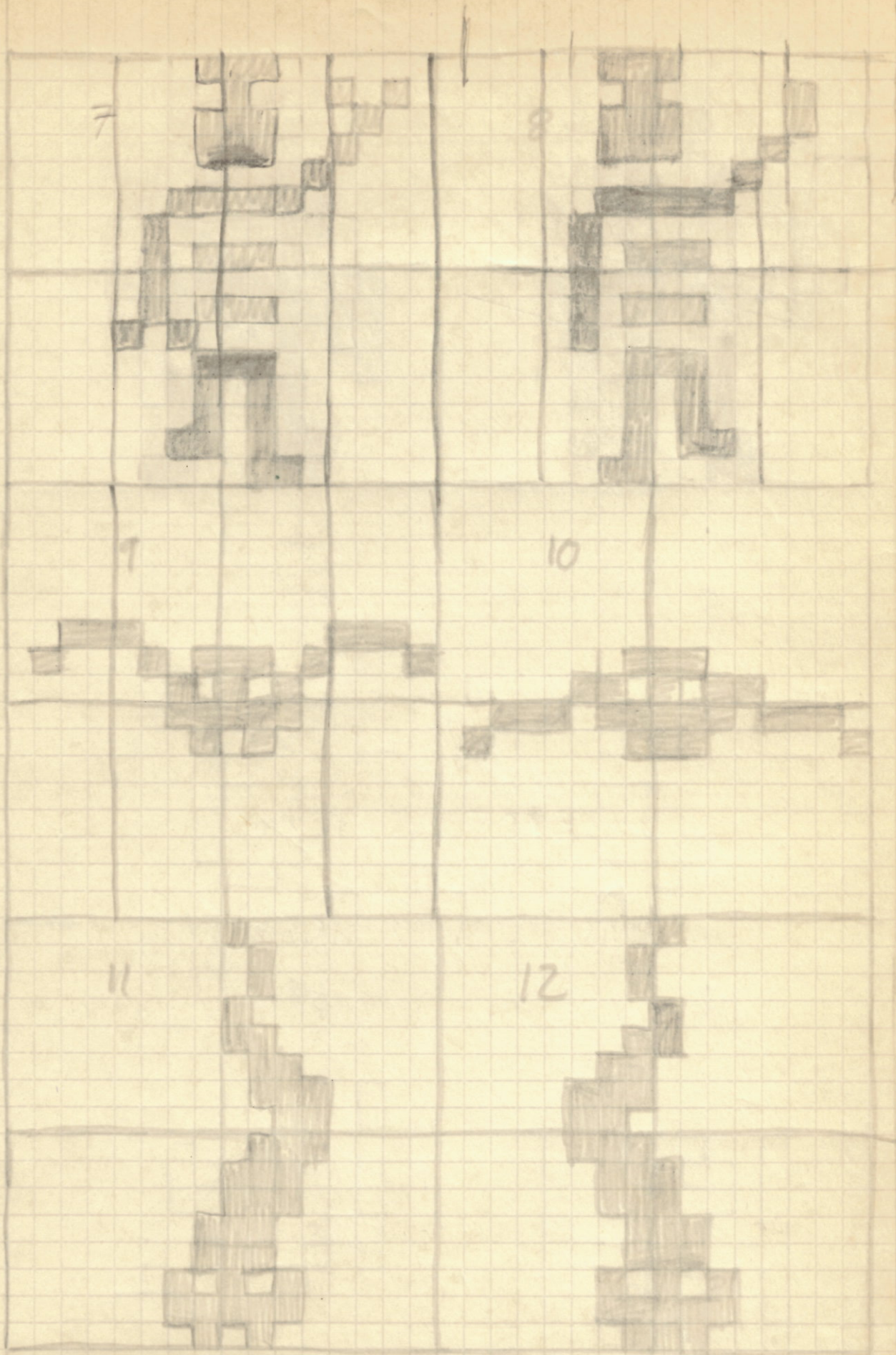
MV(3)

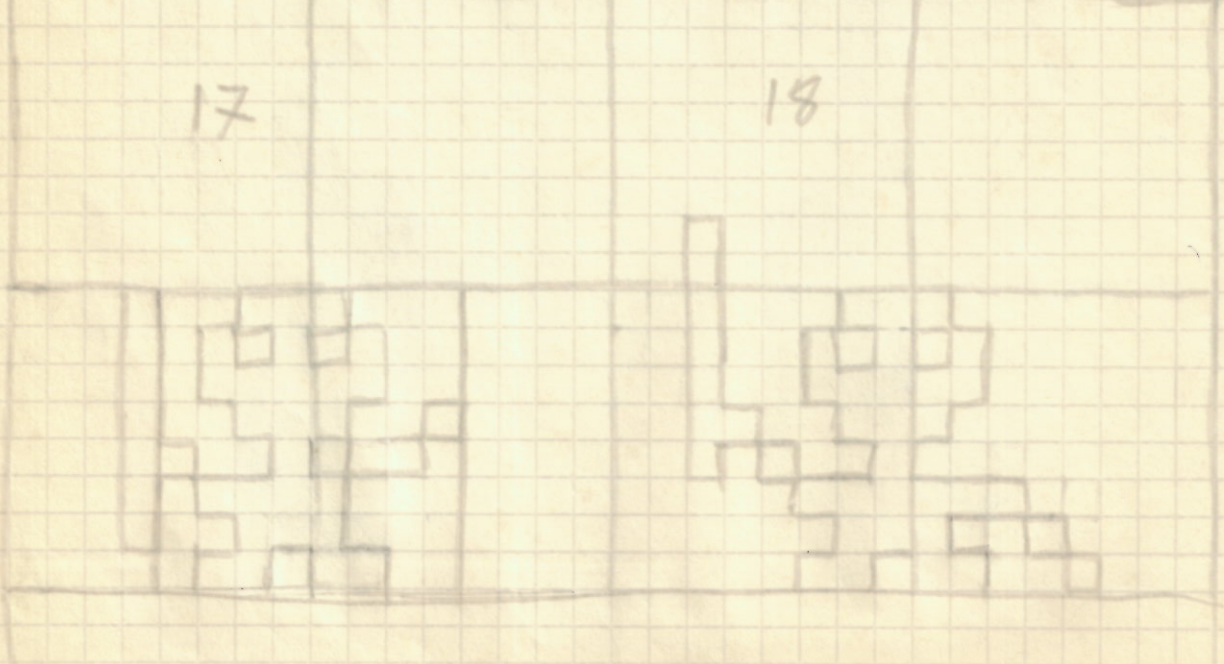
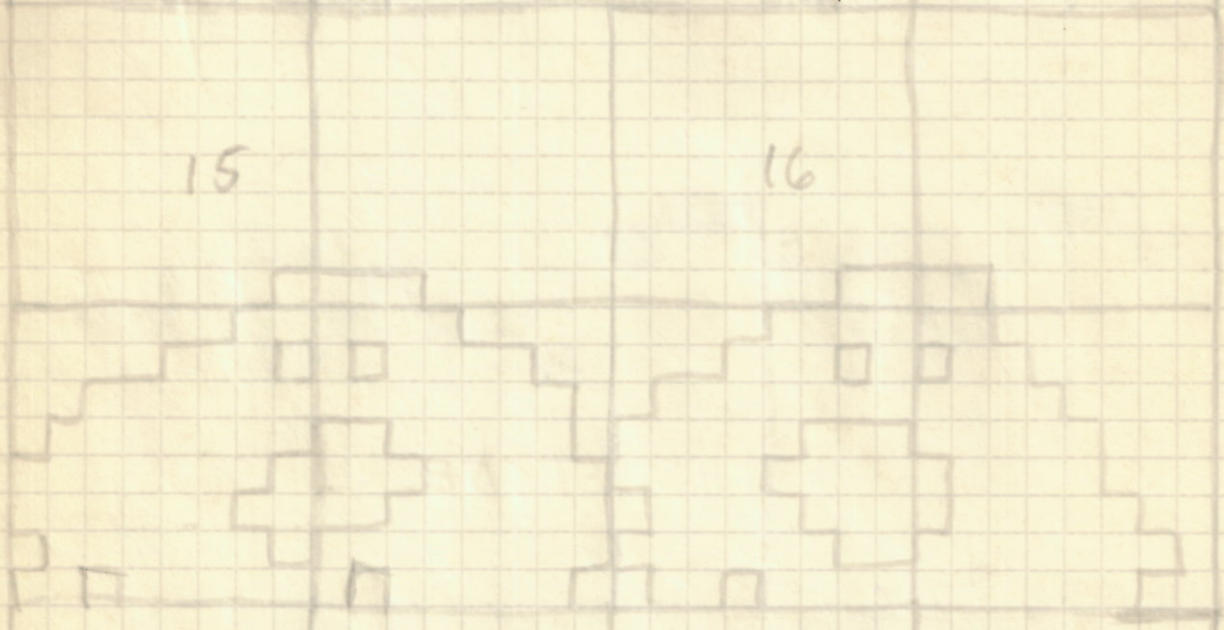
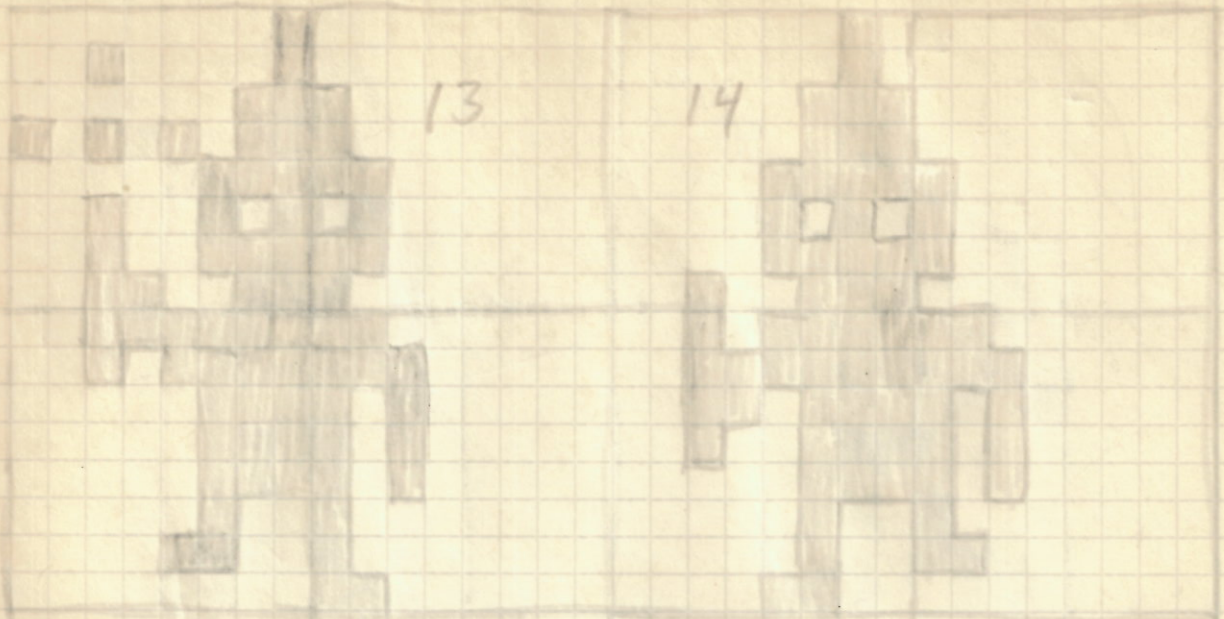


5

6







710

- 1-16 TRUMS.
- 17-28 BAS SOL.
- 29-44 BAS+TRUMS OL.
- 45-68 1 MEL
- 69-92 1 REF.
- 93-120 HUVD. REF.
- 121-124 INST. 1.
- 125-126 INST. 2. X
- 127-150 2 MEL
- 151-152 INST. 3.
- 153-200 3 MEL
- 201-212 SLOT

212
 - 13

 636
 - 212

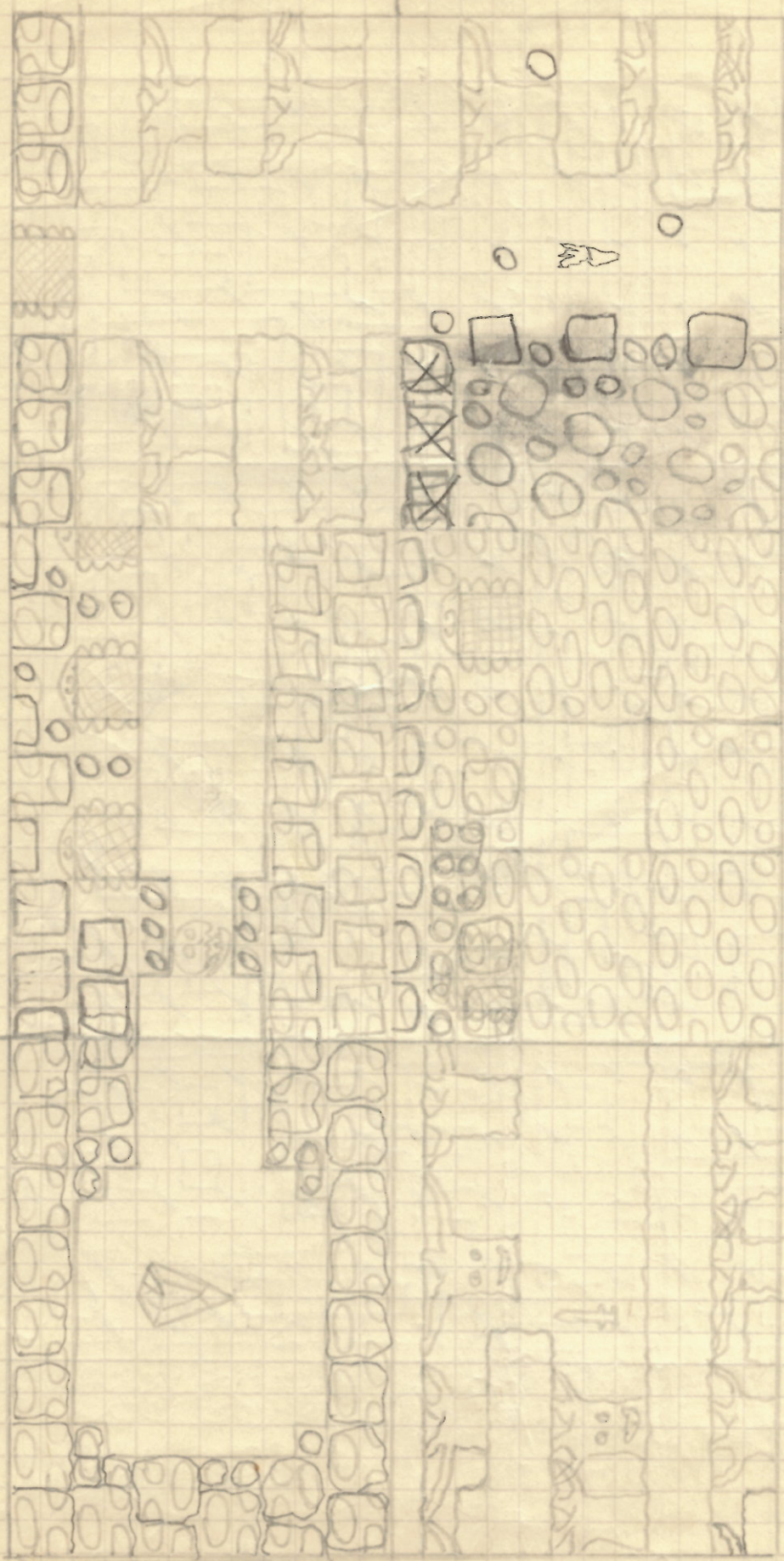
 2756

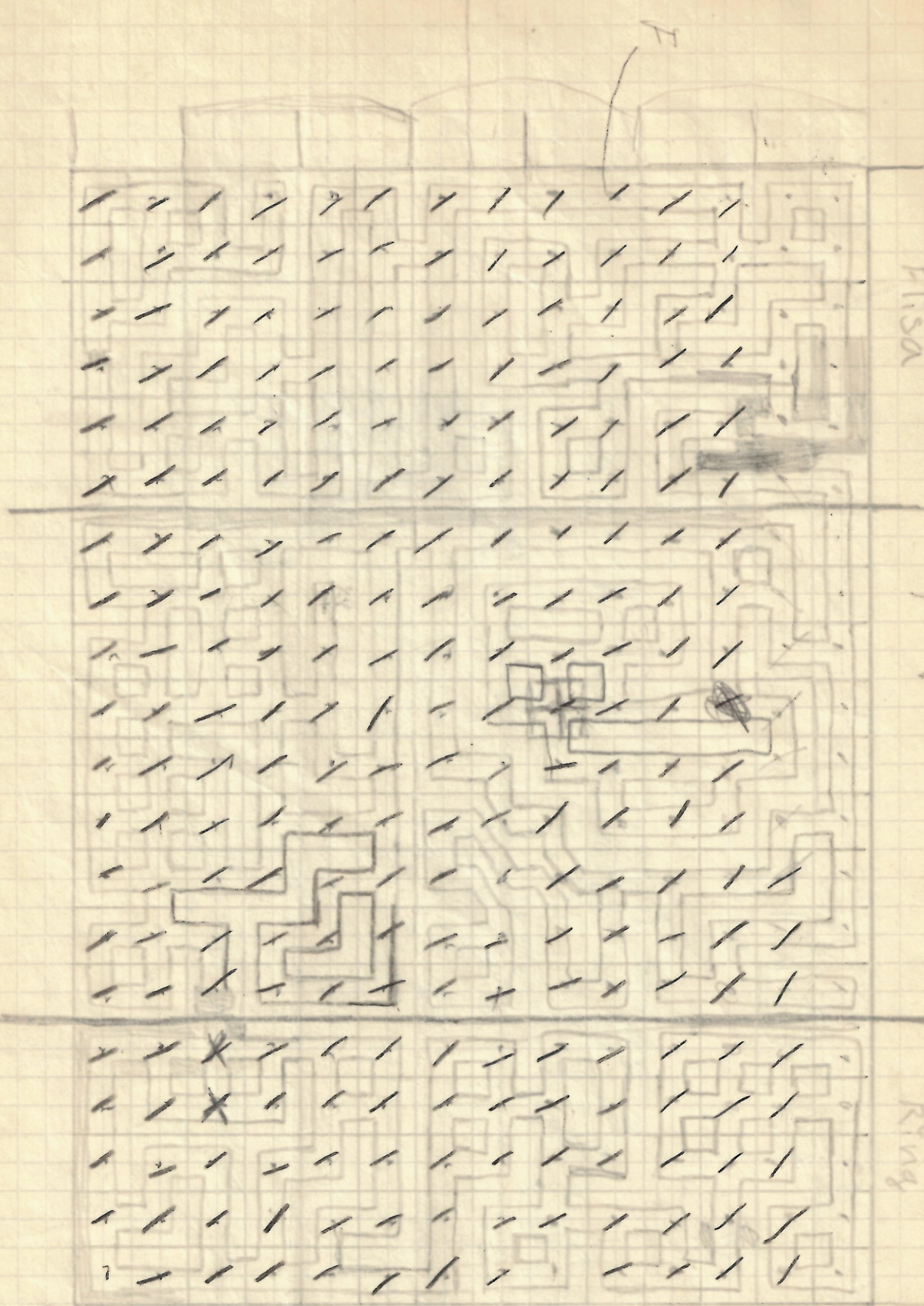
1 3 6 9 12
 15st

14*

L	F1	F2	F3	TRU

 = 182





Flisa

Fackla svand

Nyckel Ring

- 501 Svand
- 502 Nyckel
- 503 Ring
- 504 Fackla
- 505 Flisa
- VAK+
- M(40)
- M(45)
- M(50)
- M(55)
- M(60)
- M(65)
- M(70)
- M(75)
- M(80)
- M(85)
- M(90)
- M(95)
- M(100)
- M(105)
- M(110)
- M(115)
- M(120)
- M(125)
- M(130)
- M(135)
- M(140)
- M(145)
- M(150)
- M(155)
- M(160)
- M(165)
- M(170)
- M(175)
- M(180)
- M(185)
- M(190)
- M(195)
- M(200)
- M(205)
- M(210)
- M(215)
- M(220)
- M(225)
- M(230)
- M(235)
- M(240)
- M(245)
- M(250)
- M(255)
- M(260)
- M(265)
- M(270)
- M(275)
- M(280)
- M(285)
- M(290)
- M(295)
- M(300)
- M(305)
- M(310)
- M(315)
- M(320)
- M(325)
- M(330)
- M(335)
- M(340)
- M(345)
- M(350)
- M(355)
- M(360)
- M(365)
- M(370)
- M(375)
- M(380)
- M(385)
- M(390)
- M(395)
- M(400)
- M(405)
- M(410)
- M(415)
- M(420)
- M(425)
- M(430)
- M(435)
- M(440)
- M(445)
- M(450)
- M(455)
- M(460)
- M(465)
- M(470)
- M(475)
- M(480)
- M(485)
- M(490)
- M(495)
- M(500)
- M(505)
- M(510)
- M(515)
- M(520)
- M(525)
- M(530)
- M(535)
- M(540)
- M(545)
- M(550)
- M(555)
- M(560)
- M(565)
- M(570)
- M(575)
- M(580)
- M(585)
- M(590)
- M(595)
- M(600)
- M(605)
- M(610)
- M(615)
- M(620)
- M(625)
- M(630)
- M(635)
- M(640)
- M(645)
- M(650)
- M(655)
- M(660)
- M(665)
- M(670)
- M(675)
- M(680)
- M(685)
- M(690)
- M(695)
- M(700)
- M(705)
- M(710)
- M(715)
- M(720)
- M(725)
- M(730)
- M(735)
- M(740)
- M(745)
- M(750)
- M(755)
- M(760)
- M(765)
- M(770)
- M(775)
- M(780)
- M(785)
- M(790)
- M(795)
- M(800)
- M(805)
- M(810)
- M(815)
- M(820)
- M(825)
- M(830)
- M(835)
- M(840)
- M(845)
- M(850)
- M(855)
- M(860)
- M(865)
- M(870)
- M(875)
- M(880)
- M(885)
- M(890)
- M(895)
- M(900)
- M(905)
- M(910)
- M(915)
- M(920)
- M(925)
- M(930)
- M(935)
- M(940)
- M(945)
- M(950)
- M(955)
- M(960)
- M(965)
- M(970)
- M(975)
- M(980)
- M(985)
- M(990)
- M(995)
- M(1000)

MP